

# Multi-Horsepower Condenser Fan Motors

## PSC, 48 Frame, Totally Enclosed Air Over

**Features:**

- All purpose capacitor included
- Extended thru bolts
- Mounts by belly band, thru-bolts or shell holes
- Rheem mounting holes in shell
- 2 speed

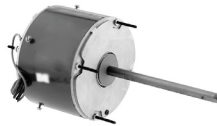


Mfg. #	Diam.	HP	Volts	RPM	Speeds	F/L Amps	Shaft Diam.	Shaft Length	Rot.	"A" Dim.	Bearing Type	Wt. Lbs.
FE6000F	5-5/8"	1/3-1/6	208-230	1075	2	2.6	1/2"	6.5"	Rev.	4.74"	Ball	14.9
FE6001F	5-5/8"	1/3-1/6	208-230	825	2	1.9	1/2"	6.5"	Rev.	5.24"	Ball	17.0
FE6002F	5-5/8"	1/2-1/5	208-230	1075	2	3.9	1/2"	6.5"	Rev.	5.36"	Ball	18.3
FE6003F	5-5/8"	1/2-1/5	208-230	825	2	2.4	1/2"	6.5"	Rev.	5.74"	Ball	19.7
FE6004F	5-5/8"	3/4-1/4	208-230	1075	2	5.8	1/2"	6.5"	Rev.	5.99"	Ball	20.5

# The Consolidator Condenser Fan Motors

## PSC, 48 Frame, Totally Enclosed

- The Original Multi-Purpose Condenser Fan Replacement Motors
- Consolidate 12 applications into one motor
- Multi-mount, multi-application
- 60°C ambient



Mfg. #	Diam.	HP	Volts	RPM	Speeds	F/L Amps	Efficiency	Shaft Diam.	Shaft Length	Rot.	"A" Dim.	Bearing Type	Wt. Lbs.
5458	5-5/8"	1/3-1/6	208-230	1075	1	2	66.40%	1/2"	6"	Rev.	4"	SAB	13.4
5458H	5-5/8"	1/3-1/6	208-230	1075	1	2	69.60%	1/2"	6"	Rev.	4"	Ball	18.1
5496	5-5/8"	1/3 - 1/5	208-230	825	1	2.4-1.4	70.00%	1/2"	6"	Rev.	5.1"	SAB	14.54

# Condenser Fan Motors

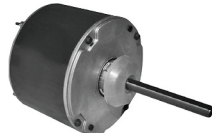
## PSC, 48 Frame, Totally Enclosed Air Over

**Applications:**

- Residential and commercial condensing unit fan motors to meet manufacturer's requirements

**Features:**

- Up to 76% efficient, saving up to 70 watts
- Hubless lead end
- Drain holes on both ends



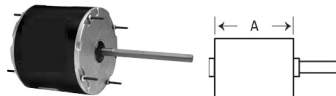
Mfg. #	Diam.	HP	Volts	RPM	Speeds	F/L Amps	Efficiency	Shaft Diam.	Shaft Length	Rot.	Bearing Type
1859PEP	5-5/8"	1/6	208-230	1075	1	0.9	76.00%	1/2"	5"	Rev.	Ball
1860PEP	5-5/8"	1/4	208-230	1075	1	1.4	76.00%	1/2"	5"	Rev.	Ball
3736PEP	5-5/8"	1/4	460	1075	1	0.7	76.00%	1/2"	5"	Rev.	Ball
1861PEP	5-5/8"	1/3	208-230	1075	1	7.5	76.00%	1/2"	5"	Rev.	Ball
3737PEP	5-5/8"	1/3	460	1075	1	1	76.00%	1/2"	5"	Rev.	Ball
1862PEP	5-5/8"	1/2	208-230	1075	1	7.5	76.00%	1/2"	5"	Rev.	Ball
3738PEP	5-5/8"	1/2	460	1075	1	1.4	76.00%	1/2"	5"	Rev.	Ball

# Multi-Horsepower Condenser Fan Motors

## PSC, 48 Frame, Totally Enclosed Air Over

**Features:**

- Automatic thermal protection
- All angle mounting
- Removable drain plugs at each end
- Multi-application
- Reversible rotation
- 60° Ambient



Mfg. #	Diam.	HP	Volts	RPM	Speeds	F/L Amps	Efficiency	Shaft Diam.	Shaft Length	Rot.	"A" Dim.	Bearing Type	Wt. Lbs.
ORM5488B	5-5/8"	1/3-1/8	208-230	825	1	2.1	—	1/2"	6.7"	Rev.	—	Ball	15.00
ORM5458	5-5/8"	1/3-1/6	208-230	1075	1	2.00	65.0%	1/2"	6-1/2"	Rev.	4-1/16"	Slv	11.8
ORM5458B	5-5/8"	1/3-1/6	208-230	1075	1	2.00	65.0%	1/2"	6-1/2"	Rev.	4-1/16"	Ball	11.8